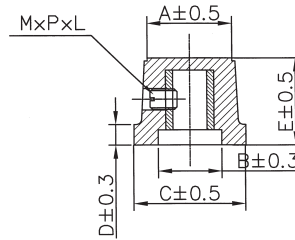
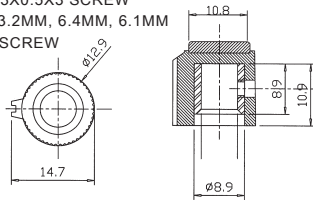


**WTN-15-1175**
**WTN-15-1176**
**WTN-15-1177**
**WTN-15-1178**

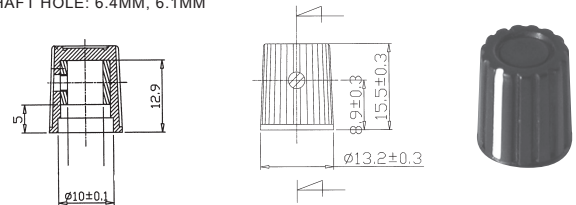

POSITION	P/N	WTN-15-1175		WTN-15-1176		WTN-15-1177		WTN-15-1178	
A		Ø 28		Ø 19.3		Ø 17		Ø 12.8	
B		Ø 23.10		Ø 14.1		Ø 11.8		Ø 9.5	
C		Ø 35.60		Ø 24		Ø 20.7		Ø 15.4	
D		2.5		2		4		3.4	
E		18.4		20		16.2		15	
MxPxL		4x0.7x 8		4x0.7x 6		4x0.7x 5		3x0.7x3	
SHAFT HOLE		Ø3.2	Ø6.1	Ø3.2	Ø6.1	Ø3.2	Ø6.1	Ø3.2	Ø6.1
		Ø6.4	18T	Ø6.4	18T	Ø6.4	18T	Ø6.4	18T


**HOUSING MATERIAL: BAKELITE**
**WTN-15-1179**

BODY MATERIAL: BAKELITE  
 INLAY COLOR: RED, BLACK, BLUE, GREEN, YELLOW  
 FASTEN WITH 3X0.5X3 SCREW  
 SHAFT HOLE: 3.2MM, 6.4MM, 6.1MM  
 18T WITHOUT SCREW


**WTN-15-1180**

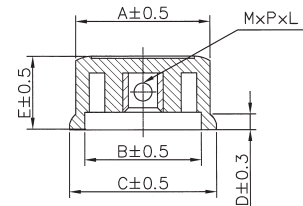
BODY MATERIAL: BAKELITE  
 SHAFT HOLE: 6.4MM, 6.1MM


**WTN-15-1181**

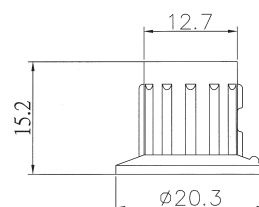
COLOR: RED, BLUE,  
 GREEN, YELLOW

**WTN-15-1182**
**WTN-15-1183**
**WTN-15-1184**
**WTN-15-1185**


POSITION	P/N	WTN-15-1181			WTN-15-1182			WTN-15-1183			WTN-15-1184			WTN-15-1184E		
A		Ø 16.3			Ø 37.6			Ø 29.4			Ø 24			Ø 18.9		
B		Ø 12			Ø 37.2			Ø 26.2			Ø 21.8			Ø 17.6		
C		Ø 19.8			Ø 45			Ø 33			Ø 27			Ø 21.9		
D		2.4			3.2			3.5			3					
E		11.4			20.3			16.4			15.6			13.6		
MxPxL		3x0.5x4			4x0.7x8			4x0.7x8			4x0.7x6			4x0.7x5		
SHAFT HOLE		Ø3.2	Ø6.1	Ø6.4	Ø3.2	Ø6.1	Ø6.4	Ø3.2	Ø6.1	Ø6.4	Ø3.2	Ø6.1	Ø6.4	Ø3.2	Ø6.1	Ø6.4
																Ø6.4


**HOUSING MATERIAL: BAKELITE**
**WTN-15-1186**

20MM DIAMETER KNOB  
 BODY MATERIAL: BAKELITE  
 INLAY COLOR: ALUMINIUM  
 FASTEN WITH 3X0.5X4 SCREW  
 SHAFT HOLE: 3.2MM, 6.1MM, 6.4MM  
 18T WITHOUT SCREW



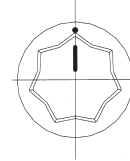
**WTN-15-1188**



**WTN-15-1189**

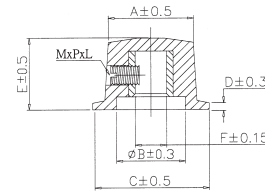


**WTN-15-1190**



UNIT:MM

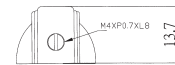
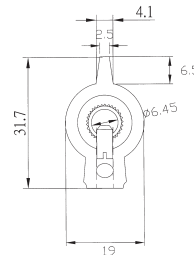
P/N	WTN-15-1188	WTN-15-1189	WTN-15-1190
POSITION			
A	Ø26	Ø 17.7	Ø 14.5
B	Ø 23.2	Ø 14.2	Ø 11.8
C	Ø 33.4	Ø 24.2	Ø 19
D	2.6	1.4	2.2
E	17.5	15.2	12.4
F	Ø 3.2   Ø 6.1   Ø 6.4	Ø 3.2   Ø 6.1   Ø 6.4	Ø 3.2   Ø 6.1   Ø 6.4
MxPxL	4x0.7x8	4x0.7x5	3x0.7x3



**HOUSING MATERIAL: BAKELITE**

**WTN-15-1191**

BODY MATERIAL: BAKELITE  
FASTEN WITH M4 SCREW  
SHAFT HOLE: 3.2MM, 6.1MM, 6.4MM



**WTN-15-1192**

BODY MATERIAL: BAKELITE  
FASTEN WITH M4 SCREW  
SHAFT HOLE: 3.2MM, 6.1MM, 6.4MM



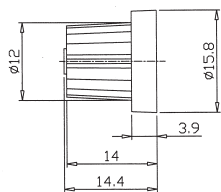
**WTN-15-1194**

BODY MATERIAL: BAKELITE  
FASTEN WITH M4 SCREW  
SHAFT HOLE: 3.2MM, 6.1MM, 6.4MM



**WTN-15-1195**

BODY MATERIAL: RUBBER  
POINTER LINE COLOR:  
RED, BLUE, YELLOW,  
ORANGE, WHITE



**WTN-15-1196**

INLAY COLOR: RED, BLUE, YELLOW  
BODY MATERIAL: PLASTIC, GRAY BODY



**WTN-15-1197**

INLAY COLOR: RED, BLUE, YELLOW  
BODY MATERIAL: PLASTIC  
GRAY BODY



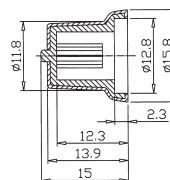
**WTN-15-1198**

INLAY COLOR: RED, BLUE, YELLOW  
BODY MATERIAL: PLASTIC  
GRAY BODY



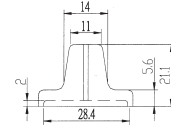
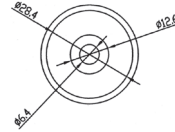
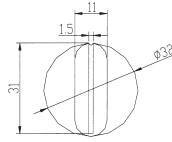
**WTN-15-1199**

BODY MATERIAL: RUBBER  
BODY COLOR: BLACK, GRAY  
POINTER LINE: RED, BLUE, GREEN YELLOW, ORANGE, WHITE



**WTN-15-1120**

BODY MATERIAL: BAKELITE  
SHAFT HOLE: 3.2MM, 6.1MM, 6.4MM



**WTN-15-1302S**

BODY MATERIAL: TPR  
POINTER LINE : WHITE



**WTN-15-S037**

POINTER KNOB  
SILVER OR GOLD CAP  
SHAFT HOLE SIZE: 6.4MM  
W/SCREW TO FIX



**WTN-15-S320**

ALUMINUM KNOB  
SHAFT HOLE SIZE:  
(A) 18T  
(B) 36T  
NO SCREW

